

Andante ♩=92 *molto rit.*

mf *f*

5 *A tempo* ♩=92

pp *mf* *pp*

10

p *mf* *p* *f*

17 **A**

p *mf* *p*

23 **B**

f *p*

28

f

33 **C**

p *mf*

39 **D**

ff *mf*

45 *molto rit.*

ff *mp* *ff*

51 *a tempo* ♩=92 *molto rit.*

mf

56 **E** *A tempo* ♩=92

pp *mf*

60

p *mf*

V.S.

64 **F**

p

68

72 **G** *molto rit.*

pp

76 *a tempo* ♩=92 *rit.*

f *mf* *f* *p*

Andante ♩=92 *molto rit.*

5 *A tempo* ♩=92

10

16 **A**

22 **B**

27

33 **C**

37

41 **D**

46 *molto rit.*

51 *a tempo* ♩=92 *molto rit.*

56 **E** *A tempo* ♩=92

V.S.

60 *p* *mf*

64 **F** *p* *mf espress.*

69 **G** *pp* *molto rit.*

76 *a tempo* ♩=92 *rit.* *f* *mf* *f* *p*

Detailed description: The image shows a musical score for a piano piece, consisting of four staves of music. The first staff (measures 60-63) starts with a piano (*p*) dynamic and a mezzo-forte (*mf*) dynamic. The second staff (measures 64-68) begins with a key signature change to F major (indicated by a box around the letter 'F') and a piano (*p*) dynamic, ending with a mezzo-forte (*mf*) dynamic and the instruction 'espress.'. The third staff (measures 69-75) starts with a key signature change to G major (indicated by a box around the letter 'G') and a pianissimo (*pp*) dynamic, with the instruction 'molto rit.'. The fourth staff (measures 76-79) begins with the tempo marking 'a tempo' and a quarter note equal to 92 (♩=92), followed by a piano (*f*) dynamic, a mezzo-forte (*mf*) dynamic, a ritardando (*rit.*) instruction, and finally a dynamic change from *f* to *p*.

Andante ♩=92*molto rit.*5 *A tempo* ♩=92

11

17 **A**

22



27

33 **C**

39



44

*molto rit.*

50

*molto rit.*56 **E** *A tempo* ♩=92

62



69 G *molto rit.*

76 *a tempo* ♩=92 *rit.*

f *mf* *f* *p*

Andante ♩=92*molto rit.*5 *A tempo* ♩=92

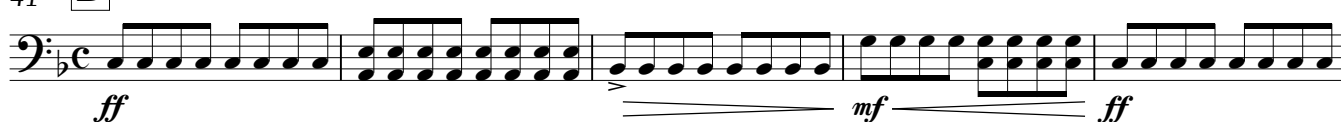
12

17 **A**24 **B**

31



36

41 **D**

46

51 *a tempo* ♩=92*molto rit.*56 **E** *A tempo* ♩=9264 **F**

V.S.

70 G *molto rit.*

76 *a tempo* ♩=92 *rit.*

f *mf* *f* *p*

Ave verum corpus

Andante ♩=92 *molto rit.* *A tempo* ♩=92

8

17 **A**

24 **B**

33 **C**

41 **D**

49 *molto rit.* *a tempo* ♩=92 *molto rit.*

56 **E** *A tempo* ♩=92

64 **F**

72 **G** 2 *molto rit.* 2 *a tempo* ♩=92 *rit.*